

OpenLMIS is a state-of-the-art, open source, web-enabled enterprise class electronic LMS solution.

OpenLMIS automates LMS processes throughout the supply chain, reducing manual data entry and improving accuracy.

The result is **more complete and timely data for decision-making**, essential to avoiding stockouts, reducing waste, and operating an effective and efficient supply chain.

OpenLMIS was designed by a community of stakeholders who believe in working together to solve common challenges. Countries and donors pooled resources to create a powerful open source product, and the result is a more flexible and powerful information system than what any one country or organization could create individually.



Country-Driven. OpenLMIS is based on detailed requirements developed by multiple ministries of health.



Open Source. Non-proprietary, open-source solutions empower countries to own, customize, extend and manage their eLMS, providing shared investment, shared learning and reduced up front development costs.



Support Community. The only open-source eLMS solution supported by a diverse group of supply chain, information technology, software engineering and public health experts—all contributing to ongoing development and sustainability across multiple countries.



Efficient. Increased supply chain visibility to better track wastage, leakage, reporting.



Easy to Use. Save time training users with straight-forward user interface.



Interoperable. Developed to interface with other health information systems to enable comprehensive visibility.



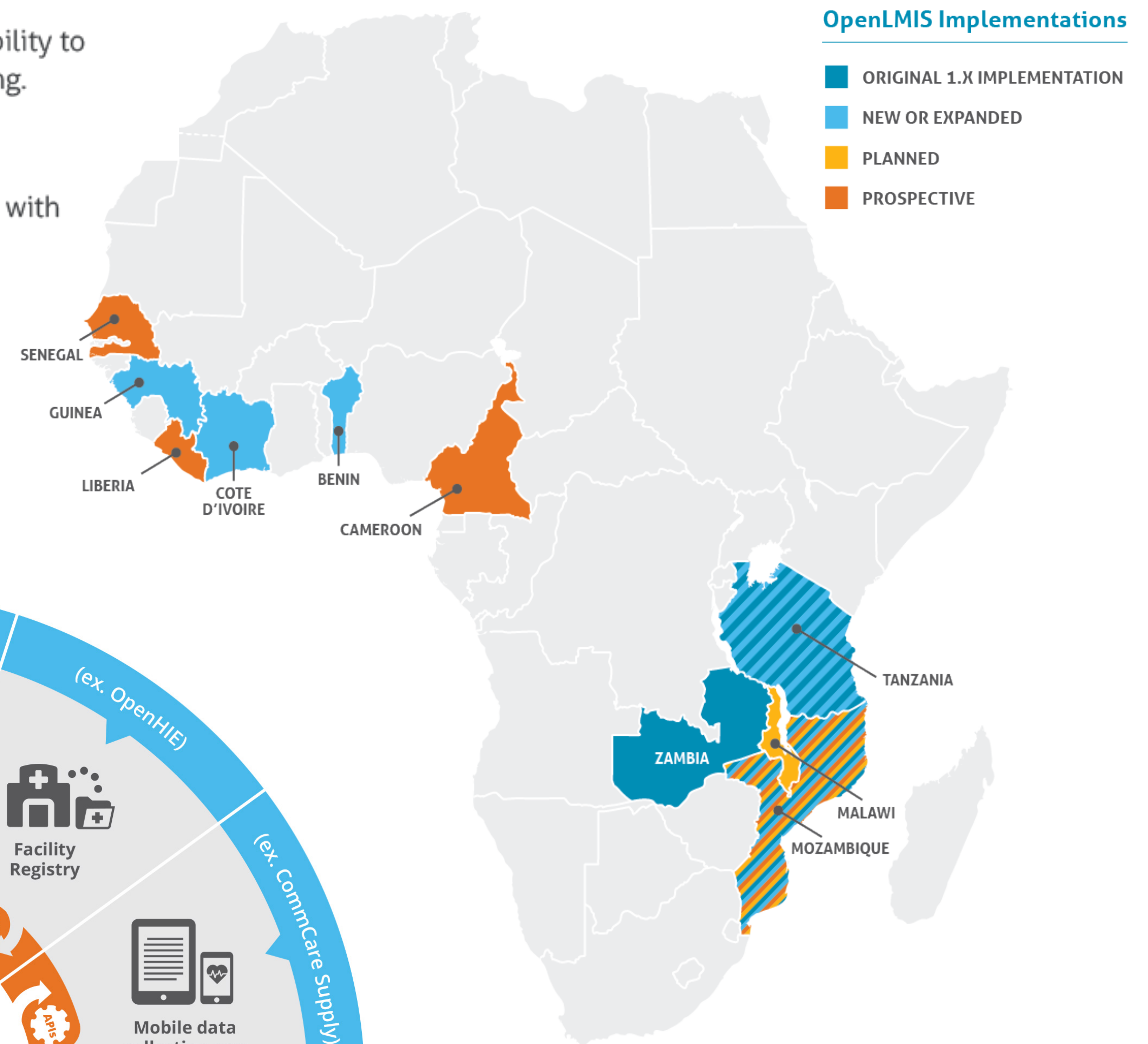
Flexible. Adaptable to a country's specific supply chain needs—data collection forms, approval hierarchies, and the supply chain model can be easily configured for each program.



Designed for Low-Infrastructure. Specifically designed to facilitate data collection in low-infrastructure environments from point-of-origin to the point-of-delivery, enabling timely review, aggregation, analysis, and forecasting.

Interoperability

Through API-driven interoperability, OpenLMIS works with a country's existing Health Information System to increase supply chain efficiency.



OpenLMIS = Informed Decision Making

- Improves Data Accuracy
- Improves Data Timeliness
- Increases Accountability
- Increases Data Visibility

